

COMING SOON

Floyd County
Public
Arts
Project





Platform 22 is a **public art initiative** led by the Floyd County Commissioners Office and funded by the Indiana Office of Community and Rural Affairs QUIP grant.

The project will include a **pop-up exhibit galleries composed of an art wall, seating and landscaping.** These 10 public art stops will be located in parks and public facilities in Floyd County.

The objective of this public art project is to **promote engagement through art and nature**

This initiative will also include a community engagement through social media.



The opening for this public art project will be in September 2017.

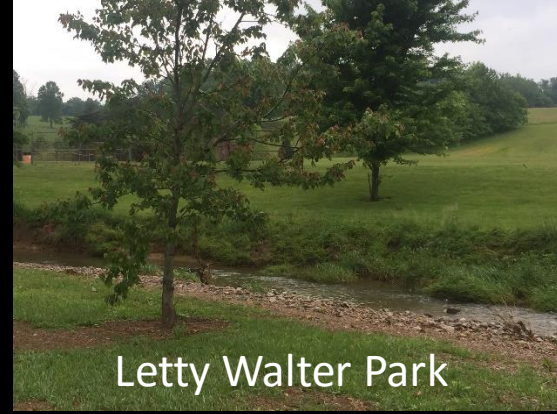
This program has several collaborative partners including:

- Floyd County Parks Department
- Floyd County Redevelopment Commission
- New Albany-Floyd County Library and Carnegie Center
- Open Door Youth Services
- Floyd County 4H
- Southern Indiana Arts Council
- Floyd County Commissioners

SITES



Edwardsville/ Garry E.
Cavan Park



Letty Walter Park



Galena Lamb Park



4H Fairgrounds



Digital Library



Herman Collier Park



Community Park



Reisz Building



Greenville Park



Kevin Hammersmith
Memorial Park

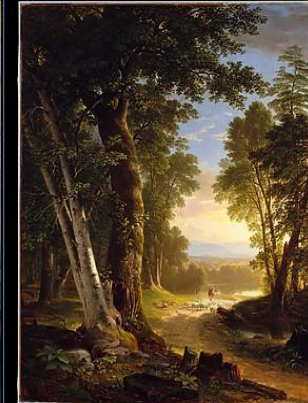
PUBLIC DOMAIN ART



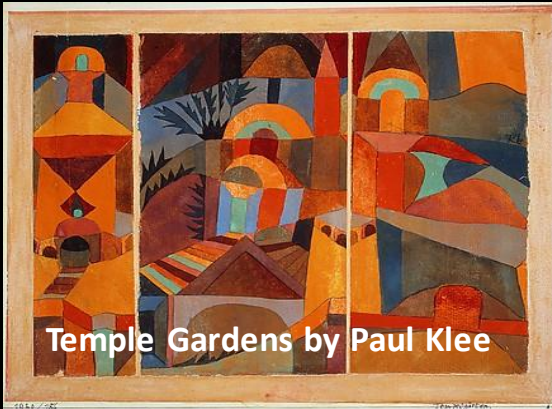
The Repast of the Lion by Henri
Rousseau



Fishing by Édouard Manet



The Beeches
by Asher
Brown
Durand



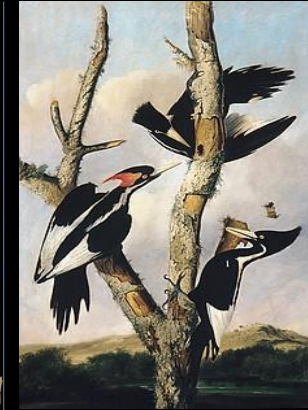
Temple Gardens by Paul Klee



Carey's
Backyard by
Loren MacIver



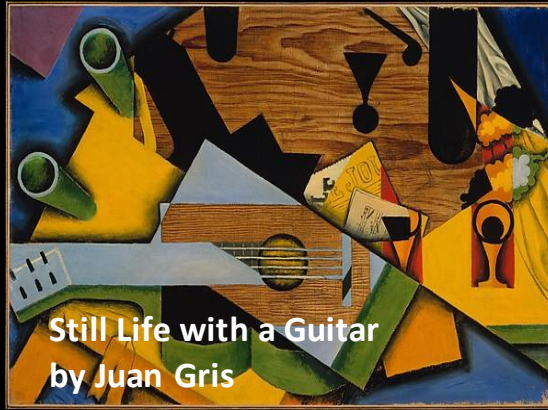
Sunflower by Vincent van Gogh



Ivory-billed
Woodpeckers by
Joseph
Bartholomew Kidd



Garden of Love II
by Wasily Kandinsky



Still Life with a Guitar
by Juan Gris



Landscape: The Parc Monceau
by Claude Monet

The exhibit areas are also designed to provide opportunities for public interaction through blank Art Walls, musical instruments, and art media.

Each exhibit site will have art benches, two display art walls to display youth art work, two blank art walls for the public to apply their artistic efforts and planters with local artwork from area youth.

