



MAURICE R. CROWLEY, D.M.D.
DIPLOMATE, AMERICAN BOARD OF ORAL
AND MAXILLOFACIAL SURGERY

PROFESSIONAL ARTS BUILDING, SUITE 402
1919 STATE STREET
NEW ALBANY, IND. 47150
TELEPHONE (812) 945-2750
FAX (812) 945-2780
INFO@CROWLEYORALSURGERY.COM

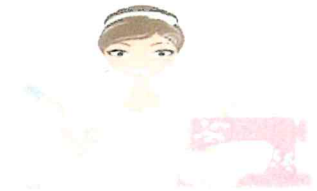


Alice
Banet Ramsby

Artist
aliceart@twc.com

812-246-9557

Acrylics, Watercolor, Prints, Mixed Media



Susan's Sew Crazy Crafts

Susan Stagg

sf.stagg@gmail.com

502-744-9090

On Facebook:

www.facebook.com/SusansSewCrazyCrafts

Stephanie Fortner
Brenda Young

Bud's (812) 945-5422
In Bloom floral & gift

319 E. Spring Street • New Albany, IN
www.budsinbloomfloral.com

Advertise your business here!



ArtAwardsFund.weebly.com

Or see on back cover.

JAMEY AEBERSOLD'S

July 1st THRU July 6th
July 8th THRU July 13th

SUMMER JAZZ WORKSHOPS

TWO GREAT WEEKS OF JAZZ!

- COMBOS
- MASTER CLASSES
- JAM SESSIONS

UNIVERSITY of LOUISVILLE
LOUISVILLE, KENTUCKY

WE WELCOME ALL ABILITIES AND ALL AGES

THIS IS A FANTASTIC OPPORTUNITY FOR ANYONE
WHO LOVES TO PLAY JAZZ

A WEEK WITH US COULD CHANGE YOUR LIFE!

WWW.SUMMERJAZZWORKSHOPS.COM

FOR MORE INFORMATION, PLEASE CONTACT

Summer Jazz Workshops • PO Box 1244
New Albany, IN 47151-1244

1-812-944-8141 • jason@jazzbooks.com

www.summerjazzworkshops.com

2-DAY COURSES ALSO AVAILABLE!



If we only knew then ...



**FOR A FREE BOOKLET
TO STOP SMOKING, PLEASE CONTACT:**

Quit Easy

PO Box 1244

New Albany, IN 47151-1244

NOW WE KNOW!

WEAPONS OF MASS DESTRUCTION



6 Million Deaths Each Year



MATHES PHARMACY



MIGHT

MEN/WOMEN - IN GOD'S HANDS - TRANSFORMED

My name is Justin Campbell and I am the owner of M.I.G.H.T. LLC. My mission is to help others become whole and to help them walk in their true purpose. I sell my book, "The New Complete You, Life Between The Lines", I speak at churches, and I do motivational talks at schools or where asked. You may contact me at www.justin-campbell.com

Support the NAFC Education Foundation

Special Thanks to the New Albany Floyd County Education Foundation for the Great Classroom Grant for Mrs. Schultz's art classrooms. We were able to purchase Geli Printing Plates, brayers, and stencils to make custom papers for an animal collage!



Donate at: <https://www.nafcedfoundation.org/donatenow/>

SHINER, LOPP & SMITH
COMPLETE INSURANCE SERVICE
BEN SHINER, CFP



2207 CHARLESTOWN ROAD
NEW ALBANY, IN 47150
PHONE: (812) 948-9239
FAX: (812) 948-1887

ALL IN PEDIATRICS

NASSIM MCMONIGLE MESCIA

& ASSOCIATES

Derby Dinner
PLAYHOUSE

RODGERS & HAMMERSTEIN'S
Oklahoma!

An American
Musical favorite!
DINNER INCLUDED

APRIL 11 - MAY 27

812-288-8281 derbydinner.com

Advertise your business here!

ArtAwardsFund.weebly.com

Or see on back cover.



First
Harrison
Your Hometown Bank.

FirstHarrison.com

EASY BANKING.
MEMBER FDIC

LIBS
PAVING CO., INC.

*Serving
Southern Indiana
For Over 45 Years*

ASPHALT PAVING & SEALCOATING

812-944-8942

www.libspaving.com

**INDIANA FARM
BUREAU INSURANCE**
www.infarmbureau.com

PA

TIM SUMMERS

Premier Agent

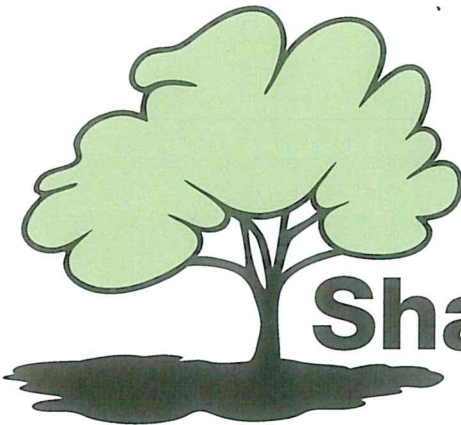
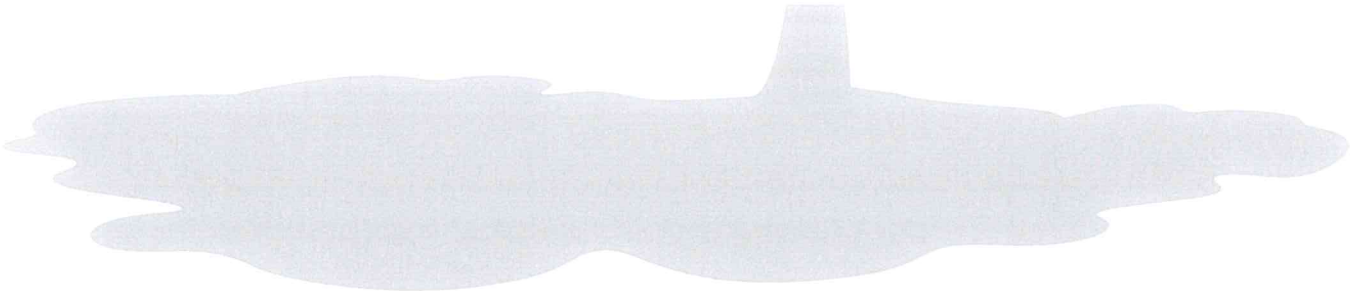
2018

760 Highlander Point Drive
Floyds Knobs, IN 47119

Office: (812) 923-9670, ext. 3065
Cell: (502) 550-6094 | Fax: (866) 760-6294

Toll-Free: (888) 546-6125

Tim.Summers@infarmbureau.com

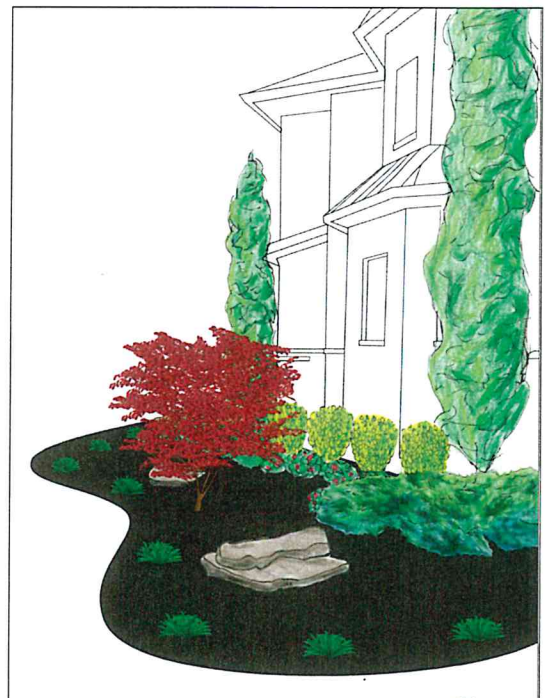


ShadeTree
LAWNSCAPES

Lawn + Landscape
502.550.9696

Commercial & Residential Services:

- Mowing
- Mulching
- Fertilization
- Snow Removal
- Retaining Walls
- Moving Makeovers
- Spring & Fall Clean-up
- Landscape Design & Installation



WWW.SHADETREELAWNSCAPES.COM

Find us on Facebook @shadetreelawnsapes